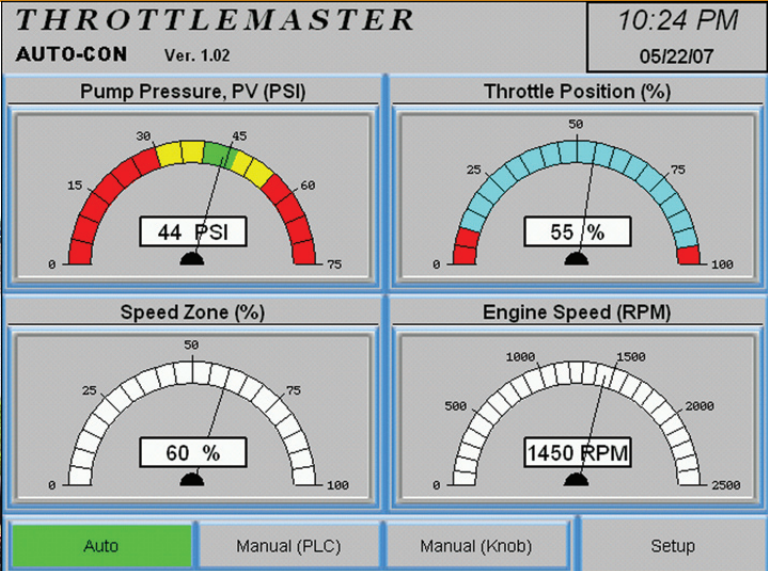


# THROTTLEMASTER

## Automated Engine Throttle Control



## INCREASE BOOSTER PUMP PRODUCTION!

The **THROTTLEMASTER** by **Cornerstone Industries** controls the booster inlet pressure by automatically adjusting the engine speed to a desired inlet pressure range on a diesel engine. The **THROTTLEMASTER** uses a PLC and operator interface touch screen to allow a user to easily adjust the pressure set point range to the correct setting in order to constantly match the booster speed to the incoming load.

The **THROTTLEMASTER** senses various booster pump inlet pressures. A PLC communicates the pressure directly to an Electronic Control Module (ECM) to allow a throttle actuator to control the diesel engine's RPMs. Accordingly, the throttle actuator moves in very fine increments when small pressure changes occur and rapidly when large pressure changes occur. In doing so, the **THROTTLEMASTER** protects the booster pump and pipeline from damage, reduces pump cavitations, and prevents water hammers.

The **THROTTLEMASTER** software, PLC, ECM, and throttle actuator constantly work together to ensure an increase in the booster pump's production. Call **today** to find out more!

- Maintain selected booster inlet pressures under various feed conditions
- Prevent booster pump cavitations
- Eliminate personal supervision
- Reduce booster pump wear
- Reduce fuel consumption



**Cornerstone  
Industries™**

**641-628-9326**  
or **515-314-4213**  
Pella, Iowa